

Fight Like a Girl

www.SignifyPink.com

FLG | on black / pink garments



FLG EMB



FIGHT GUY



FLG Distress



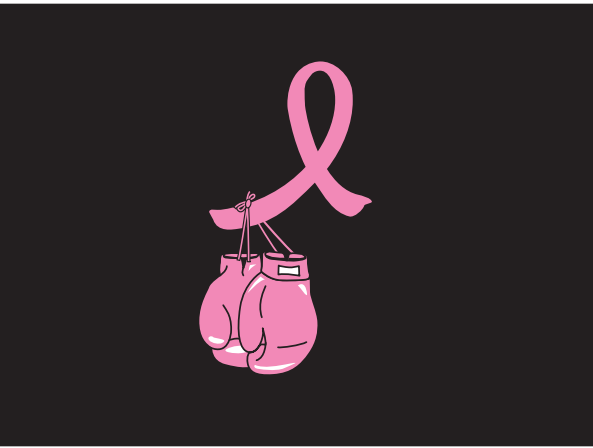
FIGHT



KFA



RG EMB



POLKA DOT



TOUGH ENOUGH



FOUGHT WON



FLG PLAID



FLG EMB



HBCI



COURAGE



THINK PINK



FLG PANTS



| ART | ITEM | COST | COLOR | S | M | L | XL | 2XL | 3XL | SUB-TOTAL |
|---------------------------------------------|------------------------------|-----------------------------|------------|----|---|----|----|-----|-----|-----------|
| FLG | Youth Short-Sleeve T-Shirt | \$15 | BLACK | | | | | | | |
| | | | GRAY | | | | | | | |
| | | | HOT PINK | | | | | | | |
| | Unisex Short-Sleeve T-Shirt | \$15 | BLACK | | | | | | | |
| | | | GRAY | | | | | | | |
| | | | HOT PINK | | | | | | | |
| | Ladies' Short-Sleeve T-Shirt | \$15 | BLACK | | | | | | | |
| | | | GRAY | | | | | | | |
| | | | LIGHT PINK | | | | | | | |
| | Unisex Long-Sleeve T-Shirt | \$20 | BLACK | | | | | | | |
| | | | GRAY | | | | | | | |
| | | | LIGHT PINK | | | | | | | |
| Unisex Crewneck Sweatshirt | \$24 | BLACK | | | | | | | | |
| | | GRAY | | | | | | | | |
| | | LIGHT PINK | | | | | | | | |
| Youth Hooded Sweatshirt | \$33 | BLACK | | | | | | | | |
| | | GRAY | | | | | | | | |
| | | LIGHT PINK | | | | | | | | |
| Youth Long-Sleeve T-Shirt | \$20 | BLACK | | | | | | | | |
| | | GRAY | | | | | | | | |
| | | LIGHT PINK | | | | | | | | |
| Unisex Hooded Sweatshirt | \$33 | BLACK | | | | | | | | |
| | | GRAY | | | | | | | | |
| | | LIGHT PINK | | | | | | | | |
| Nightshirt/Beach Cover-Up | \$24 | BLACK | ONE SIZE | | | | | | | QTY: |
| | | HOT PINK | ONE SIZE | | | | | | | QTY: |
| | | LIGHT PINK | ONE SIZE | | | | | | | |
| Ladies' Runner's V-Neck Tee | \$27 | BLACK | | | | | | | | |
| | | PINK | | | | | | | | |
| Ladies' Runner's Crewneck Tee | \$27 | BLACK/WHITE | | | | | | | | |
| | | PINK/WHITE | | | | | | | | |
| Ladies' Athletic Mesh Shorts | \$24 | LIGHT PINK/WHITE | | | | | | | | |
| | | | | NB | 6 | 12 | 18 | 24 | | |
| Infant Onesie | \$14 | BLACK | | | | | | | | |
| Picture Frame | \$15 | BLACK/SILVER | ONE SIZE | | | | | | | QTY: |
| Playing Cards | \$10 | BLACK | ONE SIZE | | | | | | | QTY: |
| Tote Bag | \$15 | BLACK | ONE SIZE | | | | | | | QTY: |
| Note Card Set | \$11 | N/A | ONE SIZE | | | | | | | QTY: |
| Take Care of Me Cards | \$6 | N/A | ONE SIZE | | | | | | | QTY: |
| Beverage Babe™ Bottle Cooler | \$11 | BLACK/PINK | ONE SIZE | | | | | | | QTY: |
| Stainless Steel Water Bottle | \$17 | BLACK | ONE SIZE | | | | | | | QTY: |
| Gripper Sport Bottle | \$13 | HOT PINK/BLACK | ONE SIZE | | | | | | | QTY: |
| Stainless Steel-Trimmed Water Bottle (18oz) | \$15 | HOT PINK | ONE SIZE | | | | | | | QTY: |
| Rhinestone-Studded Tumbler (14oz) | \$20 | BLACK | ONE SIZE | | | | | | | QTY: |
| Window Cling | \$5 | N/A | ONE SIZE | | | | | | | QTY: |
| Button | \$2 | BLACK | ONE SIZE | | | | | | | QTY: |
| Lip Balm | \$4 | HOT PINK/BLACK | ONE SIZE | | | | | | | QTY: |
| Collapsible Can Cooler | \$6 | BLACK | ONE SIZE | | | | | | | QTY: |
| Refrigerator Tablet | \$8 | N/A | ONE SIZE | | | | | | | QTY: |
| Luggage Tag | \$5 | BLACK | ONE SIZE | | | | | | | QTY: |
| Lollipop | \$5 | N/A | ONE SIZE | | | | | | | QTY: |
| Drawstring Tote | \$17 | BLACK/WHITE | ONE SIZE | | | | | | | QTY: |
| Debossed Leather Tumbler | \$21 | LIGHT PINK | ONE SIZE | | | | | | | QTY: |
| ADD \$1.50 per X after XL | | SUBTOTAL THIS COLUMN | | | | | | | | |

| ART | ITEM | COST | COLOR | S | M | L | XL | 2XL | 3XL | SUB-TOTAL | |
|-------------------------------------|---------------------------------------------|-----------------------------|---------------------------------|----------------|---|---|----|-----|-----|-----------|------|
| FLG | 12-Can Cooler | \$23 | HOT PINK | ONE SIZE | | | | | | QTY: | |
| | Deluxe Travel Duffel | \$25 | HOT PINK | ONE SIZE | | | | | | QTY: | |
| | Collapsible Bag Chair | \$29 | HOT PINK | ONE SIZE | | | | | | QTY: | |
| | Drawstring Tote | \$17 | BLACK | ONE SIZE | | | | | | QTY: | |
| HBCI | Ladies' V-Neck T-Shirt | \$18 | LAVENDER | | | | | | | | |
| | | | HOT PINK | | | | | | | | |
| | | | MELON | | | | | | | | |
| | | | AQUA | | | | | | | | |
| | | | MINT | | | | | | | | |
| | | | BANANA | | | | | | | | |
| FLG DISTRESS | Junior's Tee | \$18 | HOT PINK | | | | | | | | |
| | Tie-Dyed Youth Short-Sleeve T-Shirt | \$23 | LIGHT PINK/HOT PINK | | | | | | | | |
| | Tie-Dyed Short-Sleeve T-Shirt | \$23 | LIGHT PINK/HOT PINK | | | | | | | | |
| | Ladies' Long-Sleeve Tie-dyed Thermal | \$27 | HOT PINK | | | | | | | | |
| | Unisex Short-Sleeve T-Shirt | \$15 | BLACK | | | | | | | | |
| | Ladies' Short-Sleeve T-Shirt | \$15 | BLACK | | | | | | | | |
| | Ladies' ¾ Sleeve T-Shirt | \$17 | BLACK/HOT PINK | | | | | | | | |
| | Unisex Long-Sleeve T-Shirt | \$20 | BLACK | | | | | | | | |
| | Unisex Hooded Sweatshirt | \$33 | BLACK | | | | | | | | |
| | Ladies' Full Zip Hoodie | \$45 | HOT PINK BLACK | | | | | | | | |
| | Ladies' French Terry V-Neck Hoodie Pullover | \$32 | HOT PINK | | | | | | | | |
| | Ladies' French Terry V-Neck Pullover | \$26 | HOT PINK | | | | | | | | |
| | Ladies' Ribbed Tank Top | \$19 | BLACK LIGHT PINK HOT PINK | | | | | | | | |
| | Field Bag | \$22 | PINK | ONE SIZE | | | | | | | QTY: |
| | KFA | Football Jersey | \$23 | HOT PINK/WHITE | | | | | | | |
| | | Ladies' 2-in-1 Tee | \$20 | BLACK/WHITE | | | | | | | |
| Junior's Tee | | \$18 | HOT PINK | | | | | | | | |
| RG EMB | Cap | \$14 | BLACK | ONE SIZE | | | | | | QTY: | |
| | | | HOT PINK | ONE SIZE | | | | | | QTY: | |
| | Ladies' Scrub Pants | \$25 | BLACK LIGHT PINK | | | | | | | | |
| Ladies' Athletic Pants | \$45 | BLACK/WHITE | | | | | | | | | |
| FLG EMB | Fleece Jacket | \$45 | BLACK | | | | | | | | |
| | | | LIGHT PINK | | | | | | | | |
| | Fleece Blanket | \$22 | BLACK | ONE SIZE | | | | | | QTY: | |
| | Ladies' Sport Shirt | \$35 | BLACK | | | | | | | | |
| | | | HOT PINK | | | | | | | | |
| | Lab Coat | \$28 | BLACK | | | | | | | | |
| WHITE LIGHT PINK | | | | | | | | | | | |
| Ladies' Scrub Top | \$25 | BLACK | | | | | | | | | |
| | | LIGHT PINK | | | | | | | | | |
| Unisex Pack-n-Go Quarter-Zip Jacket | \$40 | BLACK | | | | | | | | | |
| | | LIGHT PINK | | | | | | | | | |
| ADD \$1.50 per X after XL | | SUBTOTAL THIS COLUMN | | | | | | | | | |

| ART | ITEM | COST | COLOR | S | M | L | XL | 2XL | 3XL | SUB-TOTAL |
|----------------------------------|------------------------------|-----------------------------|----------------------|----------|---|---|----|-----|------|-----------|
| FLG EMB | Apron | \$19 | BLACK | ONE SIZE | | | | | | QTY: |
| | Beanie | \$16 | BLACK | ONE SIZE | | | | | | QTY: |
| | | | PINK | ONE SIZE | | | | | QTY: | |
| | Ladies' Athletic Jacket | \$55 | HOT PINK/WHITE/BLACK | | | | | | | |
| Unisex Long-Sleeve Wind Shirt | \$50 | BLACK/WHITE | | | | | | | | |
| RIBBON & GLOVES | Ornament | \$10 | PEWTER | ONE SIZE | | | | | | QTY: |
| FIGHT | Junior's Ringer T-Shirt | \$20 | WHITE/HOT PINK | | | | | | | |
| | Unisex Short-Sleeve T-Shirt | \$15 | BLACK | | | | | | | |
| | Unisex Long-Sleeve T-Shirt | \$20 | BLACK | | | | | | | |
| | Unisex Hooded Sweatshirt | \$33 | BLACK | | | | | | | |
| Football Jersey | \$23 | HOT PINK/WHITE | | | | | | | | |
| FIGHT GUY | Unisex Short-Sleeve T-Shirt | \$15 | BLACK | | | | | | | |
| | Unisex Long-Sleeve T-Shirt | \$20 | BLACK | | | | | | | |
| | Unisex Hooded Sweatshirt | \$33 | BLACK | | | | | | | |
| TOUGH ENOUGH | Unisex Hooded Sweatshirt | \$33 | BLACK | | | | | | | |
| | Unisex Short-Sleeve T-Shirt | \$15 | BLACK | | | | | | | |
| | Unisex Long-Sleeve T-Shirt | \$27 | BLACK | | | | | | | |
| FOUGHT WON | Unisex Short-Sleeve T-Shirt | \$15 | BLACK | | | | | | | |
| | Ladies' Short-Sleeve T-Shirt | \$15 | BLACK | | | | | | | |
| | Unisex Long-Sleeve T-Shirt | \$20 | BLACK | | | | | | | |
| | Unisex Hooded Sweatshirt | \$33 | BLACK | | | | | | | |
| THINK PINK | Youth Short Sleeve T-Shirt | \$15 | BLACK HOT PINK | | | | | | | |
| | Youth Hooded Sweatshirt | \$33 | BLACK | | | | | | | |
| | Unisex Short Sleeve T-Shirt | \$15 | BLACK HOT PINK | | | | | | | |
| | Unisex Long Sleeve T-Shirt | \$20 | BLACK | | | | | | | |
| | Unisex Hooded Sweatshirt | \$33 | BLACK HOT PINK | | | | | | | |
| | Unisex Crewneck Sweatshirt | \$24 | BLACK HOT PINK | | | | | | | |
| FLG PLAID | Flannel Pants | \$27 | PINK PLAID | | | | | | | |
| | Open Bottom Sweatpants | \$30 | BLACK | | | | | | | |
| | Ladies' Sporty Sweat Capris | \$27 | BLACK HOT PINK | | | | | | | |
| FLG PLAID | Ladies' Short Sleeve T-Shirt | \$15 | WHITE | | | | | | | |
| POLKA DOT | Hooded Sweatshirt | \$38 | BLACK | | | | | | | |
| COL-RAGE | Junior's Ringer T-Shirt | \$20 | WHITE/HOT PINK | | | | | | | |
| ADD \$1.50 per X after XL | | SUBTOTAL ALL COLUMNS | | | | | | | | |
| TOTAL | | | | | | | | | | |

Fight Like a Girl Floyd Valley Hospital Benefit for Breast Cancer Awareness - Floyd Valley Education Office

NAME _____

COMPANY _____

ADDRESS _____

PHONE _____

EMAIL _____

ORDERS DUE BY the 1st and 15th of each month.

RETURN ORDER FORMS TO Kari Daale at 714 Lincoln Street NE Le Mars, IA 51031 or at 712-546-3401

Please include cash or check with order.

MAKE CHECKS PAYABLE TO Floyd Valley Hospital.

Visit our Web site for item images
www.SignifyPink.com

Signify has paired the designs on this order form to the specific apparel and/or items on which they are featured. To expedite orders, these items are pre-produced and fulfilled as in-stock items. Therefore, designs on this form cannot be mixed and matched. For custom orders, please contact Glenda Elliott, at glenda.elliott@sigler.com or 515.577.0780. Thank you!